

Due NEXT DAY
by 10 AM

Limit 3
non-identical models

**Overnight Model Checkout
Basics**

\$1.00 per hour
if overdue

No renewals
& no holds

OVERNIGHT MODEL CHECKOUT POLICY

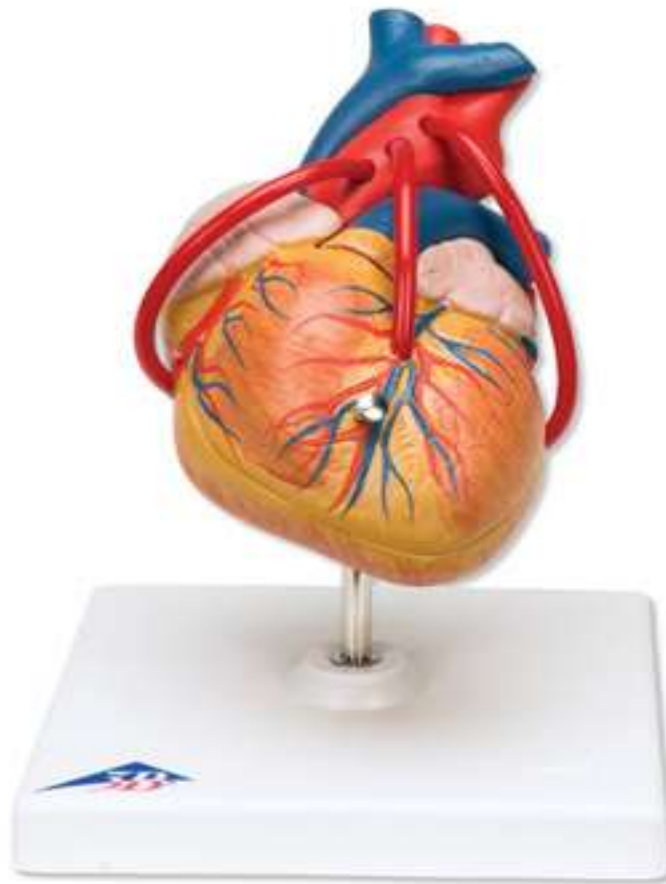
- Models are due **NEXT DAY** at the reserve desk by **10:00 A.M.**
- Models and accompanying pieces are **due Monday-Friday only.**
- Models and accompanying pieces **checked out on Friday will be due Monday morning at 10 A.M.**
- Checkout of models and accompanying pieces on weekends will also be due Monday at 10 A.M.
- Models and accompanying pieces checked out before a **term or holiday break** will be due by **10 A.M. on the first day that classes resume.**
- There will be **no model checkout between 10 A.M. & 11 A.M.** Checkout for models will resume at 11:00 A.M.
- Models may not be held or reserved for any patron.
- Models may not be renewed.
- **Limit three** non-identical models per checkout.
- Do not return models or accompanying pieces in the book drop.
- Checkout bag must be returned with model(s). Replacement fees will apply if bag is lost or damaged.
- Do not write on models. Models with any damage will be subject to a damage assessment to determine fees to cover said damage.
- **Late fees are assessed per item, with no grace period, at \$1.00 per hour overdue.**



Classic skull, numbered [QM105 .BR152 c. 1-4]

Two-piece skull + mesh bag + key (4 pieces)

Minimum replacement cost: \$128 + \$13.54 (mesh bag)



Classic heart with bypass [QM181 .BR153 c.1-4]

Two piece model + removable stand + key (4 pieces)

Minimum replacement cost: \$102



Classic pregnancy series [NON-CIRCULATING]

Model series has one key for set.

Minimum replacement cost: \$104.13/each.

Lower Extremities



Loose foot skeleton (left)

Minimum replacement cost: \$69.00



Loose foot skeleton (right)

Minimum replacement value: \$69.00



Foot skeleton (left)

Minimum replacement value: \$57



Foot skeleton (right)

Minimum replacement cost: \$57.00



Loose foot & ankle skeleton (left)

Minimum replacement value: \$79.00



Loose foot & ankle skeleton (right)

Minimum replacement value: \$79.00



Foot skeleton with tibia & fibula (left)

Minimum replacement value: \$71.00



Foot skeleton with tibia & fibula (right)

Minimum replacement value: \$71.00



Femur (left)

Minimum replacement value: \$36.00



Femur (right)

Minimum replacement value: \$36.00



Tibia (left)

Minimum replacement value: \$23.00



Tibia (right)

Minimum replacement value: \$23.00



Fibula (left)

Minimum replacement value: \$15.00



Fibula (right)

Minimum replacement value: \$15.00



Hip bone (left)

Minimum replacement value: \$25.00



Hip bone (right)

Minimum replacement value: \$25.00



Leg skeleton (left)

Minimum replacement value: \$117.00



Leg skeleton (right)

Minimum replacement value: \$117.00



Leg skeleton with hip bone (left)

Minimum replacement value: \$124



Leg skeleton with hip bone (right)

Minimum replacement value \$124



Functional hip joint (right)

Minimum replacement value \$84



Functional knee joint (right)

Minimum replacement value \$84.00

Vertebral Columns



Classic flexible spine with femur heads & painted muscles

Spine (1 piece) + optional stand (3 pieces) + key + bag

Minimum replacement value: \$181 (spine & key) + \$52 (stand)



Stand for vertebral columns

Minimum replacement value: \$52.00



Spinal column : cervical section

Minimum replacement value: \$75.00



Spinal column : thoracic section

Minimum replacement value: \$75.00



Spinal column : lumbar section

Minimum replacement value: \$75.00



Lumbar section with dorsolateral prolapsed intervertebral disc

Minimum replacement value: \$109.00

Upper Extremities



Loose hand skeleton (left)

Minimum replacement value: \$66.00



Loose hand skeleton (right)

Minimum replacement value: \$66.00



Wire-mounted hand skeleton (left)

Minimum replacement value: \$58.00



Wire-mounted hand skeleton (right)

Minimum replacement value: \$58.00



Loose hand skeleton with radius & ulna (left)

Minimum replacement value: \$98.00



Loose hand skeleton with radius & ulna (right)

Minimum replacement value: \$98.00



Wired hand skeleton with radius & ulna (left)

Minimum replacement value: \$80.00



Wired hand skeleton with radius & ulna (right)

Minimum replacement value: \$80.00



Humerus (left)

Minimum replacement value: \$23.00



Humerus (right)

Minimum replacement value: \$23.00



Ulna (left)

Minimum replacement value: \$18.00



Ulna (right)

Minimum replacement value: \$18.00



Scapula (left)

Minimum replacement value: \$14.00



Scapula (right)

Minimum replacement value: \$14.00



Arm skeleton (left)

Minimum replacement value: \$92.00



Arm skeleton (right)

Minimum replacement value: \$92.00



Arm skeleton with scapula & clavicle (left)

Minimum replacement value: \$104.00



Arm skeleton with scapula & clavicle (right)

Minimum replacement value: \$104.00



Clavicle (left)

Minimum replacement value: \$14.00



Clavicle (right)

Minimum replacement value: \$14.00



Sternum with rib cartilage

Minimum replacement value: \$29.00



Ribs [NON-CIRCULATING]

Minimum replacement value: \$49.00



Radius (left)

Minimum replacement value: \$14.00



Radius (right)

Minimum replacement value: \$14.00



Sports shoulder with rotator cuff [NON-CIRCULATING]

Four piece model [detachable muscles]+ removable stand + key

Minimum replacement cost: \$246.00